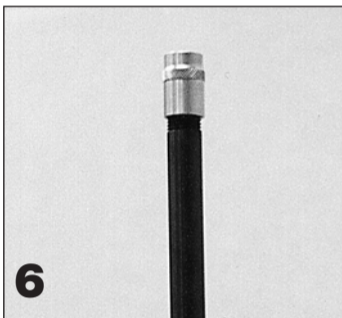
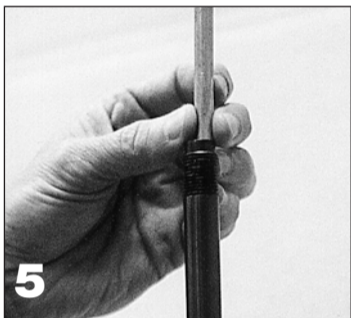
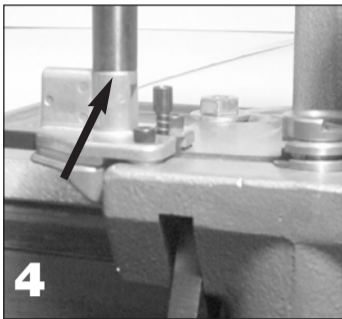
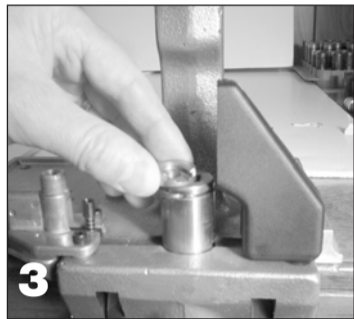
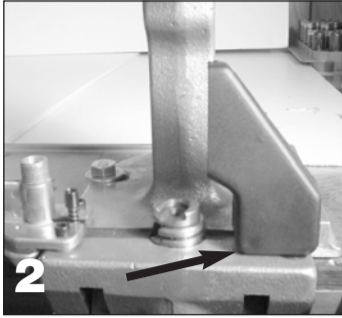
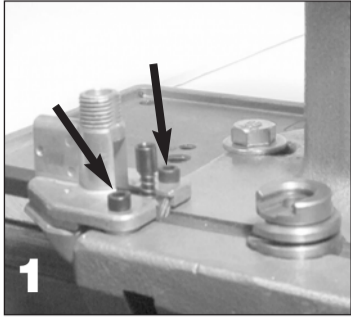


## INSTALLATION AND SET UP

Mount the Turret Press to a sturdy workbench or table with two 3/8" bolts of sufficient length to penetrate the press base and bench. (Note: This set up can be used for a right or left handed person). Install the threaded portion of the handle through the toggle block. The handle must remain tight at all times to avoid damage to the handle and toggle block. Install the Primer Dispenser Assembly as shown in photo 1. Finger tighten the two 8-32x1/2 socket headcap screws. Align the primer transfer bar in the slot to obtain full movement. Center primer plug and sleeve in shell holder and tighten the 8-32x1/2 Socket Head Cap Screw.



Slide the dispenser bottom until it rests against the Turret frame and tighten the two 5-40x3/8 Socket Head Cap Screws. Note: The small Primer Plug was installed at the factory.

Slip the primer catcher into place on the press in the holes provided. See photo 2.

The Turret Press ram accepts removable type shell holders. To install, insert the shell holder into the ram and twist slightly to the left. To remove, twist slightly to the right. See photo 3.

Screw the safety tube onto the Primer Dispenser until hand tight as shown in photo 4.

Insert the appropriate sized priming tube (large or small) into the safety tube as shown in photo 5.

Seat the primer tube until it bottoms out in the Safety Tube. Approximately 1/4" of the primer tube will protrude above the safety tube. Now install the tube cap by screwing it onto the safety tube. See photo 6.

## FILLING THE PRIMER TUBE

### WARNING:

Care must be taken when loading the primer feed tube. Do not force primers because of the stacked condition of the primers, if one should ignite, all the primers in the tube will explode, causing an extreme hazard. No more than five pounds of force should be applied when picking up primers with the primer feed tube (this can be checked using a bathroom scale). If difficult primer pick-up should occur, investigate the cause and clear the condition or return the primer feed tube to RCBS for correction. Always wear eye protection when handling primers.

We recommend the RCBS Primer Tray-2 to be used in conjunction with the primer feed tube. This plastic primer tray and cover have been designed to orient primers for fast, easy handling and primer pick-up.

Step 1. Scatter the primers onto the grooved surface of the primer tray. Then, gently shake the tray horizontally until all the primers are positioned anvil side up. Place the cover on the tray, while holding the tray and cover together, turn the tray upside down.

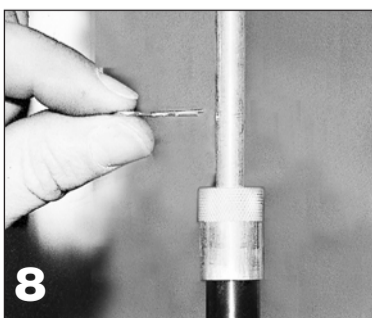


The primers will now be oriented anvil side down for easy pick-up with the appropriate size priming tube assembly. See photo 7.

Step 2. Insert the primer feed tube cotter pin into the cross hole before picking up any primers.

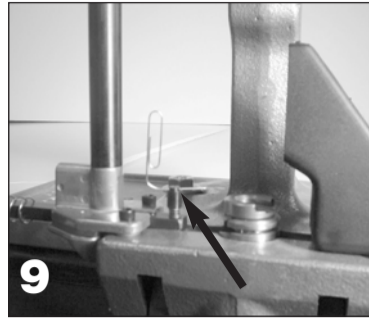
**WARNING:** It is the responsibility of the operator to insure that all primers are properly oriented. Attempting to seat a primer upside down in a case may cause the primer to detonate, causing serious personal injury or damage to the equipment. Primer residue is dangerous when exposed to heat, impact and/or static electricity. Therefore, it is important to keep the primer tubes clean. We recommend periodic cleaning with soap and warm water.

Step 3. Use the plastic tipped end of the tube opposite the cotter pin for primer pick-up. After filling, place the tube, cotter pin end down, onto the top of the safety tube cap. While holding the tube, remove the cotter pin, dropping the primers into the top of the safety tube cap. Be sure all primers are transferred into the Priming Tube. See photo 8.



## PRIMING ON YOUR TURRET PRESS

Start by sizing and depriming a case. Lower the ram approximately half the stroke. Next, with your free hand, pull out on the primer transfer bar until it picks up a primer. With the ram still in half stroke position, push the primer transfer bar into the slot in the press ram until it stops. While holding the Transfer bar in, lower the ram until the primer is fully seated. Now release the transfer bar as you lower the handle and raise the ram. This will spring the transfer bar out of the slot in the ram.



## PRIMER SIZE CHANGEOVER

Select the correct primer plug and sleeve (large or small). Drop the Primer Plug through the sleeve. Place the spring on the primer plug. Screw the Primer Plug into the transfer bar. Tighten the assembly with a small nail or a straightened paper clip through the hole in the Primer Plug. Do not over tighten. See photo 9.

Remove the safety tube cap. Remove the empty tube inside the safety tube. Install the correct tube, large or small, inside the safety tube. See photo 5. Install the safety tube cap onto the safety tube. See photo 6.

## MAINTENANCE

This press was lubricated at the factory. However, it is necessary to lubricate all moving parts from time to time with gun oil. If rust spots appear, swab lightly with gun oil and wipe dry. Care should be taken not to apply oil where it could come in contact with primer pockets or primers. Oil will deactivate primers. It is a good practice to clean the press prior to lubrication to remove grit and other residue. You will note the ease at which the epoxy enamel paint wipes clean. This finish is impervious to oil and is extremely chip and fade resistant.

## WARNING:

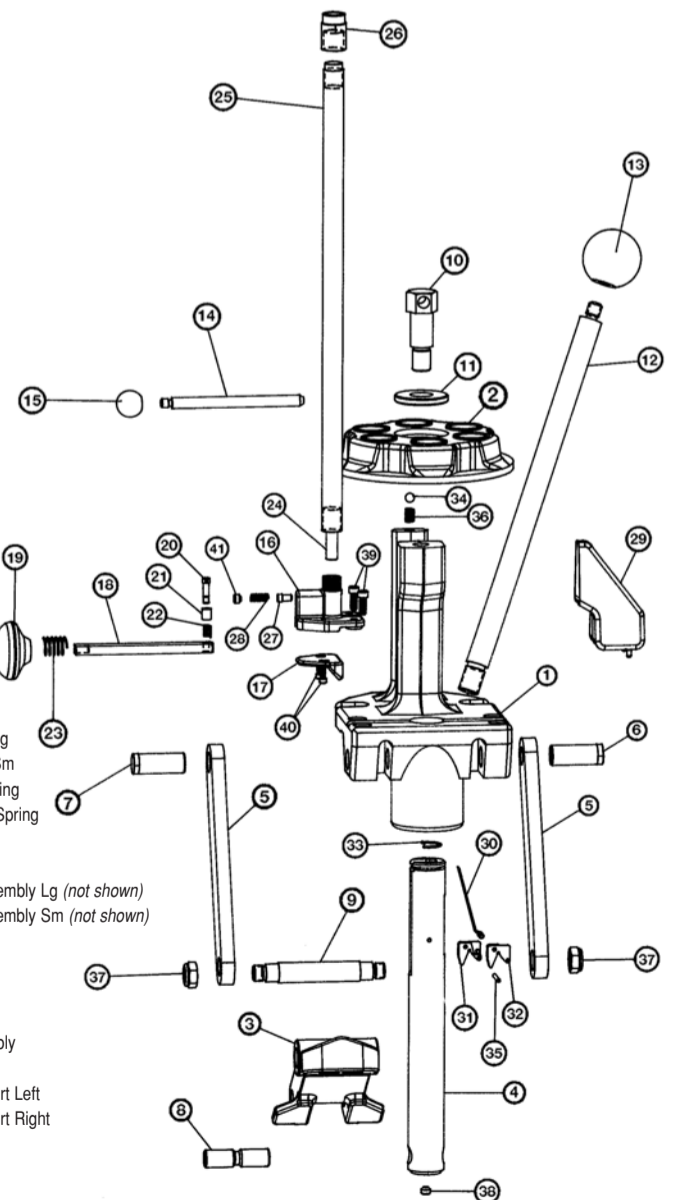
### TO AVOID INJURY, READ AND FOLLOW THESE SAFE PRIMING PRACTICES:

- DO NOT attempt to prime military cartridge cases with crimped primer pockets until the crimp has been removed with a counter sink, a special reamer or by swaging. Primers seated into crimped pockets are subject to deformation which can cause misfires and even detonation during seating which can cause serious personal injury.
- DO NOT attempt to seat primers against excessive resistance which may cause detonation and possible serious personal injury. Check to be certain that the case was not previously primed, that the fired primer was removed, that a portion of the primer cup wall is not still in the primer pocket and that you are using the correct size primer.
- DO NOT modify the priming system in any manner or attempt to use similar parts or priming systems from other manufacturers. To do so could result in primer detonations resulting in serious personal injury.
- NEVER seat a primer into a powder charged case.
- Decapping live primers is extremely dangerous and is not recommended.

## TURRET PRESS PARTS LIST

KEY PART # DESCRIPTION

1	788250	Press Frame
2	788251	Turret Head
3	788252	Toggle Block
4	788254	Ram
5	188719	Links (2)
6	788257	Link Pin Right
7	788258	Link Pin Left
8	788255	Ram Pin
9	788256	Toggle Block Pin
10	788260	Turret Head Bolt
11	788261	Turret Head Washer
12	788259	Press Handle
13	187414	Handle Ball
14	788262	Turret Pin
15	180054	LAMI Handle Knob
16	788253	Primer Dispenser
17	188104	Dispenser Bottom
18	788263	Primer Transfer Bar
19	198943	Palm Knob
20	709554	APF Primer Plug Lg
21	709555	APF Primer Plug Sm
22	709506	APF Primer Sleeve Lg
23	709507	APF Primer Sleeve Sm
24	109508	APF Primer Plug Spring
25	188107	Primer Transfer Bar Spring
26	788924	Primer Tube Large
27	788923	Primer Tube Small
28	709581	Primer Tube Subassembly Lg (not shown)
29	709582	Primer Tube Subassembly Sm (not shown)
30	788264	Safety Tube
31	788265	Tube Cap
32	709595	APF Stop Pin
33	109596	APF Coil Spring
34	788277	Primer Catch Assembly
35	188105	Primer Deflector
36	188102	Primer Deflector Insert Left
37	188103	Primer Deflector Insert Right
38	109112	Ram Clip Spring
39	187152	Detent Ball
40	788266	Deflector Pin
41	187153	Detent Spring
42	188108	7/16 Nyloc Nuts (2)
43	187219	1/4-28x3/8 Socket Head Cap Screw
44	187227	8-32x1/2 Socket Head Cap Screw (2)
45	188109	5-40x3/8 Socket Head Cap Screw (2)
46	109591	1/4-28x3/16 Cup Point Set Screw
47	187211	10-32x1" Socket Head Cap Screw



Questions? Call Customer Service at  
1-800-533-5000

Monday - Friday 6:30am - 4pm Pacific Time

Because RCBS has no control over the choice of components, the manner in which they are assembled, the use of this product, or the guns in which the resulting ammunition may be used, we assume no responsibility, expressed or implied, for the use of ammunition reloaded with this product.

- RECORD KEEPING**
- Keep complete records of reloads. Apply a descriptive label to each box showing the date produced, and the primer, powder and bullet used. Labels for this purpose are packed with SPEER bullets. Never attempt to guess at the identity of your ammunition.
  - DO NOT smoke while reloading.
  - This will preserve the identity and shelf life of the powder.
  - When you finish a reloading session, pour any remaining powder back into its original factory container. Throw and check the weight of at least ten charges. This will assure you that the correct powder charge is being thrown.
  - When using a powder measure, settle the powder in the powder hopper before charging any cases. powder hopper has been filled.
  - If you use a powder measure, replace the lids on both the powder hopper and powder can after the manufacturer's label on the original canister. Discard all mixed powders and those of uncertain identity.
  - DO NOT use any powder unless its identity is positively known. The only positive identification is the away from the bench to avoid picking up the wrong one.
  - DO NOT have more than one can of powder on the bench at one time. Powder cans should be stored to anyone nearby.
  - DO NOT force primers. Use care in handling primers.
  - DO NOT store primers in bulk. The blast of just a few hundred primers is sufficient to cause serious injury storage.
  - Keep primers in the original factory container until ready to use. Return unused primers to provide safe factory packaging for safety and to preserve their identity. Primer packaging is designed to provide safe regulations.
  - Do not use primers of unknown identity. Scrap unknown primers in accordance with applicable regulations.
  - Avoid areas where static electricity is evident.
  - Store primers and powder beyond the reach of children and away from heat, dampness, open flames and electrical equipment. Avoid areas where static electricity is evident.
- PRIMERS AND POWDER**
- Observe ALL WARNINGS ABOUT THE USE OF MAXIMUM LISTED LOADS.
  - Use only laboratory tested reloading data. We highly recommend the current SPEER Reloading Manual.
- LOADING DATA**
- Unnecessary risk when reloading without wearing safety glasses.
  - Always wear adequate eye protection to protect your eyes from flying particles. You assume prove hazardous. Don't rush - load at a leisurely pace.
  - The influence of medications or alcohol. Develop a reloading routine to avoid mistakes which may the influence of medications or alcohol. Develop a reloading routine to avoid mistakes which may the influence of medications or alcohol. Develop a reloading routine to avoid mistakes which may
  - Reload only when you can give your undivided attention. Do not reload when fatigued or ill, or under order. Promptly and completely clean up primer and powder spills.
  - Observe "good housekeeping" in the reloading area. Keep tools and components neat, clean and Don't take short cuts. Attempting to bypass established procedures is an invitation to an accident. thoroughly familiar with the operation of the product. If you do not have written instructions, request a copy from the equipment manufacturer.
- GENERAL**
- Use all equipment as the manufacturer recommends. Study the instructions carefully and become thoroughly familiar with the operation of the product. If you do not have written instructions, request a copy from the equipment manufacturer.
  - Do not understand some operation, call us at 1-800-533-5000 and a technician will assist you. This result in severe personal injury and/or equipment damage. Failure to properly operate certain reloading equipment can operate the related reloading equipment. Failure to properly operate certain reloading equipment can
  - Before using the RCBS Turret Press, read the instruction manual carefully to fully learn how to safely
  - IMPORTANT: READ THIS SECTION FIRST

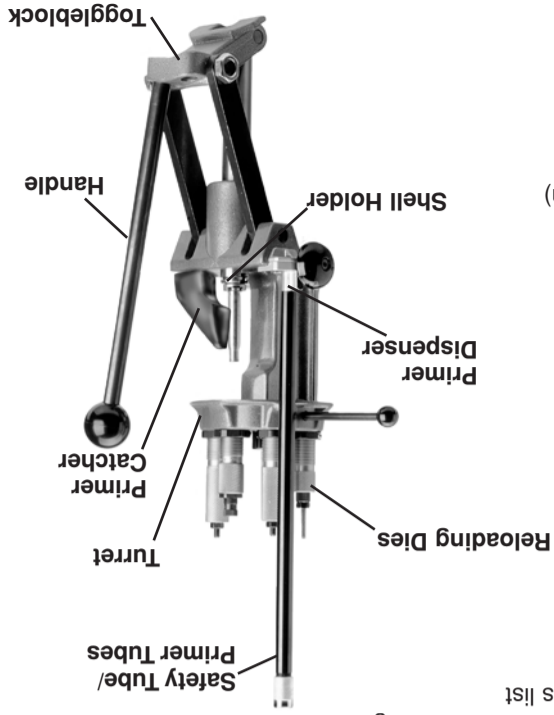
Reloading is an enjoyable and rewarding hobby that can be conducted safely. But, as with any hobby, carelessness or negligence can make reloading hazardous. This product has been designed from the beginning with the user's safety in mind. When reloading, safety rules must be followed. By observing these rules, the chance of a hazardous occurrence causing personal injury or property damage is minimized.

**SAFETY**

Reloading is an enjoyable and rewarding hobby that can be conducted safely. But, as with any hobby, carelessness or negligence can make reloading hazardous. This product has been designed from the beginning with the user's safety in mind. When reloading, safety rules must be followed. By observing these rules, the chance of a hazardous occurrence causing personal injury or property damage is minimized.

**GENERAL**

- Use all equipment as the manufacturer recommends. Study the instructions carefully and become thoroughly familiar with the operation of the product. If you do not have written instructions, request a copy from the equipment manufacturer.
- Do not understand some operation, call us at 1-800-533-5000 and a technician will assist you. This result in severe personal injury and/or equipment damage. Failure to properly operate certain reloading equipment can operate the related reloading equipment. Failure to properly operate certain reloading equipment can
- Before using the RCBS Turret Press, read the instruction manual carefully to fully learn how to safely
- IMPORTANT: READ THIS SECTION FIRST



- Press Frame Assembly
- Handle
- Primer Tube Large
- Primer Tube Small
- Primer Tube Assembly Large
- Primer Tube Assembly Small
- Safety Tube
- Primer Catcher
- Bag #1
- Bag #2
- Primer Dispenser Assembly
- 8-32x1/2" SHCS (Two)
- Primer Plug Large
- Primer Plug Sleeve Large
- Primer Plug Spring (One)
- Hex Keys 3/32 & 9/64 (One each)
- Turret Pin Assembly

**UNPACKING**

Unpack the press carefully and look for the following items listed below. Refer to the parts list for identification.

The RCBS Turret Press now gives you a choice between single stage or progressive reloading. With Dies pre-set in the turret, you can increase your output from 50 to 200 rounds per hour with the turret. Dies can be left in the turret to eliminate teardown and set-up. The Turret handle is also used to remove the turret head, eliminating the need for other tools. The Turret Head exchanges easily with the removal of one bolt (a 3/4" socket can be used). This press is covered by the RCBS Lifetime Warranty. If it ever breaks or doesn't work, we will fix it or replace it free. No time limit, no questions asked and no fine print.

**RCBS TURRET HEAD QUICK CHANGEOVER**

The RCBS Turret Head makes it easy to maintain your die set-up while you change calibers by using our quick change turret heads.

**RCBS TURRET HEAD**

The RCBS Turret Head is made to accept standard 7/8"-14 threaded reloading dies, with no bushings or adapters required.



The dies and/or RCBS Uniflow Powder Measure can now be mounted. The instructions for the use and set-up of the reloading dies and other accessories come packaged with these items. You will find through experimentation that many multiple combinations can be obtained in the mounting sequence of dies and powder measures, permitting two or more calibers to be set up at the same time.

**RCBS TURRET PRESS**

The new RCBS Turret Press now gives you a choice between single stage or progressive reloading. With Dies pre-set in the turret, you can increase your output from 50 to 200 rounds per hour with the turret. Dies can be left in the turret to eliminate teardown and set-up. The Turret handle is also used to remove the turret head, eliminating the need for other tools. The Turret Head exchanges easily with the removal of one bolt (a 3/4" socket can be used). This press is covered by the RCBS Lifetime Warranty. If it ever breaks or doesn't work, we will fix it or replace it free. No time limit, no questions asked and no fine print.

**ACCESSORIES**

**Uniflow Powder Measure 09010**  
Features an adjustable cylinder. Iron and steel construction ensures long life and accuracy. See photo 10.

**Case Activated Linkage Kit 98911**  
It automatically activates dispensing a charge with every pull of the handle only when a case is present under the Uniflow Powder Measure. See photo 11.

**Lock Out Die 87540**  
The Lock-Out Die detects a "no powder" or a "double charge" condition in the progressive reloading process. See photo 12.

**Powder Checker Die 87590**  
A simple, effective way to visually check powder charges before seating a bullet when you use a progressive press. Shows low and high charges. See Photo 13.

**Lube Die**  
Decaps and lubes cases in one step. Eliminates time and mess associated with lubing cases. Four sizes cover 45 popular calibers. Refer to our RCBS Catalog for a complete list of caliber sizes. See Photo 14.

**Universal Decapping Die 87580**  
Quickly removes primers from case before cleaning. Handles calibers 22 through 45. See photo 15.

**Precision Mic 09440**  
Accurately reads your chamber headspace and bullet seating depth to 0.001 of an inch. See photo 16.

**Micro Pro Scale 86040**  
This new sleek scale is compact, lightweight and portable. Option of AC powered or 9v battery. See photo 17.



**RCBS**  
PRECISIONEERED® RELOADING EQUIPMENT

We think that we make the very best reloading equipment in the world. If you agree, please tell your friends. If you disagree, tell us - we want to do something about it!

**Customer Service**

1-800-533-5000 (US or Canada) or 530-533-5191  
Hours: Monday - Friday, 6:30am - 4:00pm Pacific Time  
e-mail: rcbstech@atk.com • www.rcbs.com  
RCBS • 605 Oro Dam Blvd. • Oroville, CA 95965

CCI • SPEER • RCBS  
OUTERS • RAMLINE • ORBEX • FEDERAL  
201279/0404

**RCBS**  
**TURRET PRESS**



PRODUCT INSTRUCTIONS